

**Our path to a sustainable future**





**“By manufacturing sustainable products we intend to establish climate-neutral production from 2023 onward and achieve full climate neutrality by 2030. With this goal, Schreiner Group clearly surpasses other industrial companies.”**

**CEO Roland Schreiner**

Our path to a sustainable future

# Sustainable Solutions



Schreiner Group views sustainability as a holistic system consisting of economic success, environmental responsibility, and social commitment.





Our path to a sustainable future

# Facts and Figures

## Results of our Continuous Efforts in the Field of Sustainability

- CO<sub>2</sub> reduction in the last 11 years by more than **70%** (approx. 5,600 t, Scope 1 + 2).
- Use of green electricity since 2013; > **55%** of our energy mix is from renewable sources
- Operation of a 400 kWp photovoltaic system: annual reduction of **200 t of CO<sub>2</sub>**.
- Use of **geothermal energy** (ground water) for heating and cooling of all buildings in Oberschleissheim.
- **Recycling** of the silicone paper liner produced during label dispensing (over 100 tons annually).
- **Sustainable product design and processes**, e.g., PCS matrix die cutting.

We consciously take responsibility for people, the environment, and society. Schreiner Group fosters sustainable actions and considers ecological factors in the development of our products. Accordingly, we expect sustainable actions and ethical behavior from our business partners as well.



Our path to a sustainable future

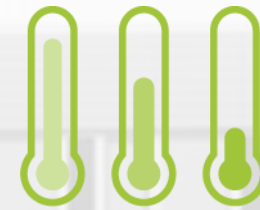
# Schreiner Group Sustainability Targets



100% switch to sustainable energy sources



Design products and processes for maximum efficiency



Reduce energy consumption (heat and electricity)



Recycle production waste



Use sustainable raw materials

# Actions for Improvement 2023

## Installation of 7 heat pumps in Oberschleissheim

- Reduction of natural gas by **100%**
- Reduction of CO<sub>2</sub> emissions by **90%** <sup>1</sup>
- Reduction of overall energy consumption by **20%**

## Optimization of air conditioning routines

## Installation of PV modules with up to 1.000 kWp in Oberschleissheim

## Further reduction, re-use, and recycling of waste:

200 ton-recycling of PET and paper liners. Customers may also recycle liners.

Further replacement of solvent-based inks, less use of cleaning solvents and warm water

Evaluation of production waste recycling (contribution to industry consortium CELAB <sup>2</sup>)

<sup>1</sup>) Scope 1 – direct emissions | Scope 2 – indirect emissions from purchased energy

<sup>2</sup>) CELAB-Europe is a collaboration of the whole self-adhesive label value chain to allow stakeholders to collect and recycle their used release liner and matrix material.





Science-based targets provide a clearly defined pathway for companies to reduce greenhouse gas (GHG) emissions, helping prevent the worst impacts of climate change and supporting future-proof business growth.

## Science Based Targets initiative (SBTi) and CDP

In 2022 SGR submitted a commitment letter to the SBTi, thereby officially committing ourselves to the Paris Climate Accords' goal of limiting global warming to a maximum of 1.5 °C. Our path to climate neutrality is tracked annually via the Corporate Carbon Footprint (CCF, scopes 1\* - 3\* ) and made public.

Data is published and rated through CDP.

\*) Scope 1 – direct emissions | Scope 2 – indirect emissions from purchased energy | Sope 3 - indirect value chain emissions

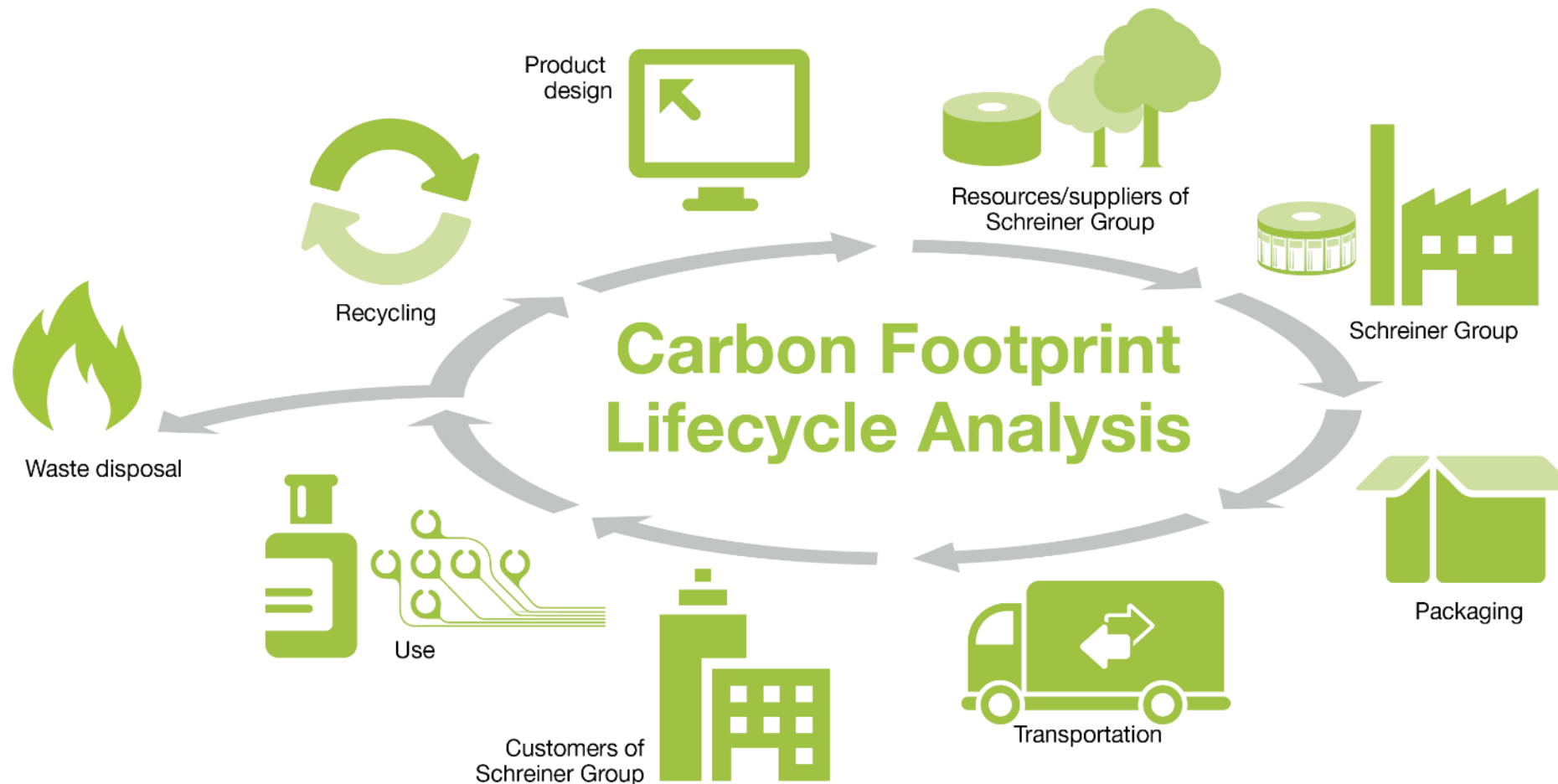


SCIENCE  
BASED  
TARGETS

DRIVING AMBITIOUS CORPORATE CLIMATE ACTION

Our path to a sustainable future

# Corporate Carbon Footprint and Product Carbon Footprint



## Corporate Carbon Footprint (CCF)

A corporate carbon footprint refers to the total amount of greenhouse gas emissions produced by a company as a result of its operations, including both direct and indirect emissions.

## Product Carbon Footprint (PCF)

Sums up the total greenhouse gas emissions generated by a product over the different stages of its lifecycle.

Our approach for PCF:  
Cradle-to-gate-evaluation \*)

\*) Cradle-to-gate: all direct and indirect emissions after production and packaging of the goods, before shipment)



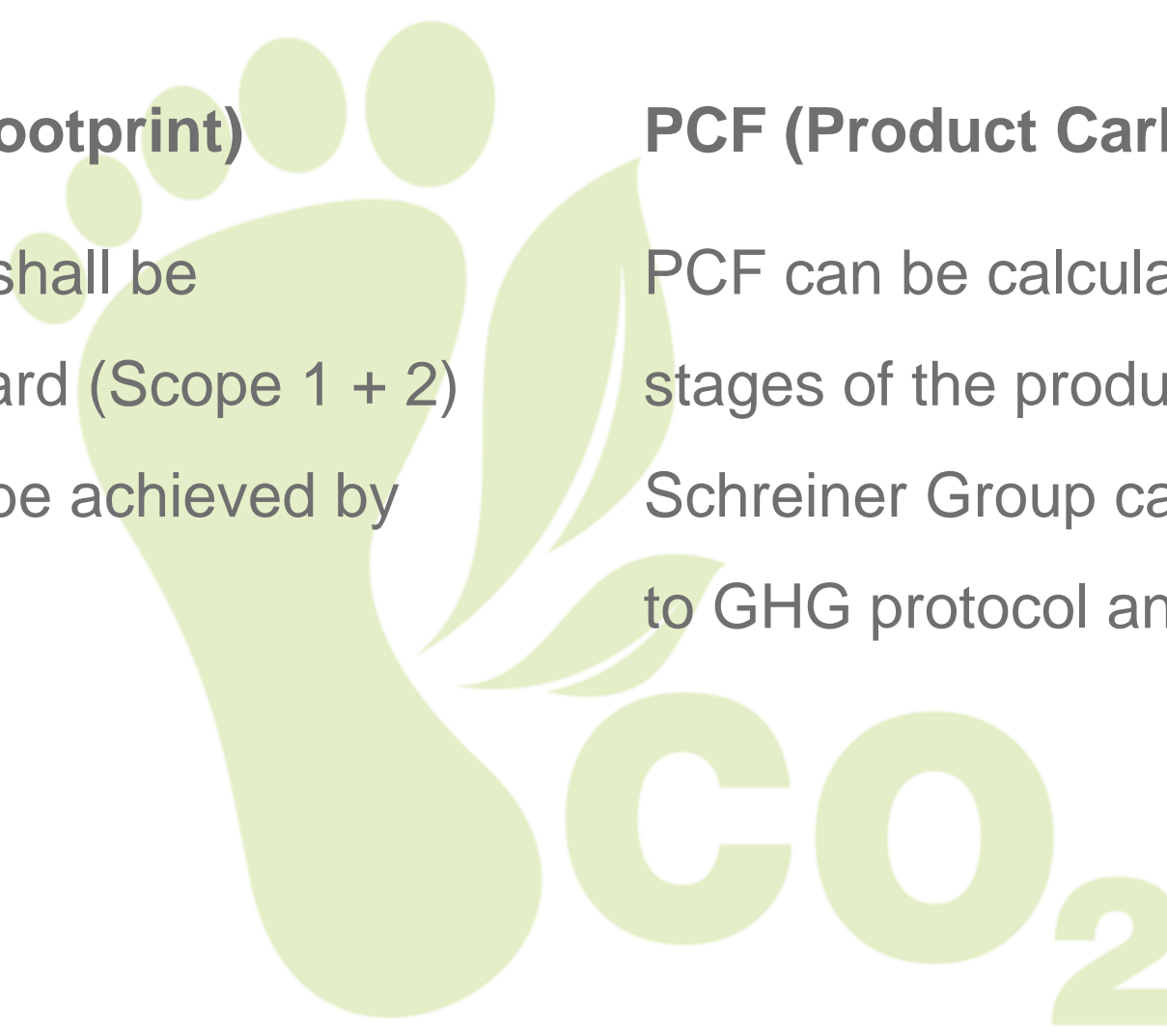
# CCF / PCF – Targets

## CCF (Corporate Carbon Footprint)

Climate-neutral production shall be established from 2023 onward (Scope 1 + 2)  
Full climate neutrality shall be achieved by 2030 (Scope 1-3)

## PCF (Product Carbon Footprint)

PCF can be calculated on item level in early stages of the product development process.  
Schreiner Group can calculate PCF according to GHG protocol and ISO 14067.

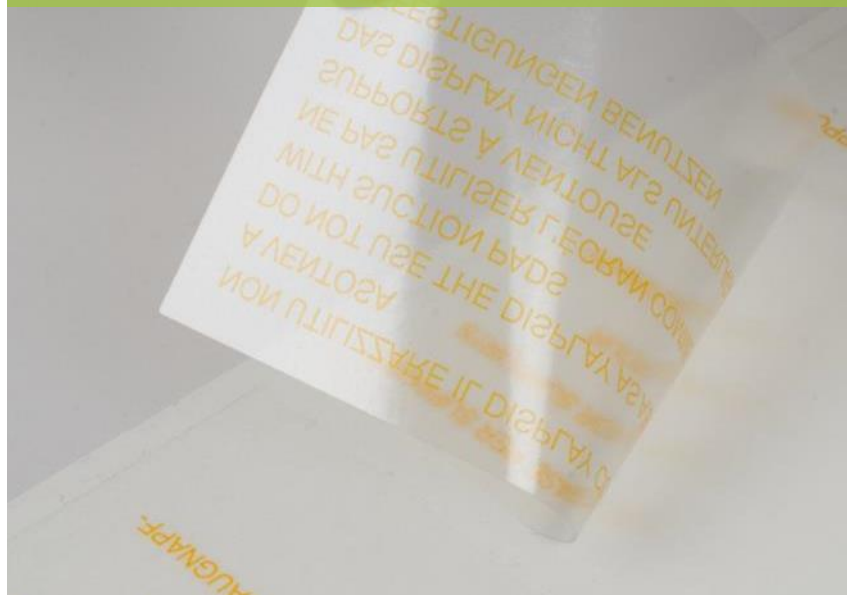




# Use of Sustainable Plastic Films – Under Development

Sustainable products for the automotive and engineering-based industries

Under development:



Display protection film made from rPP (100% chem. recycled)



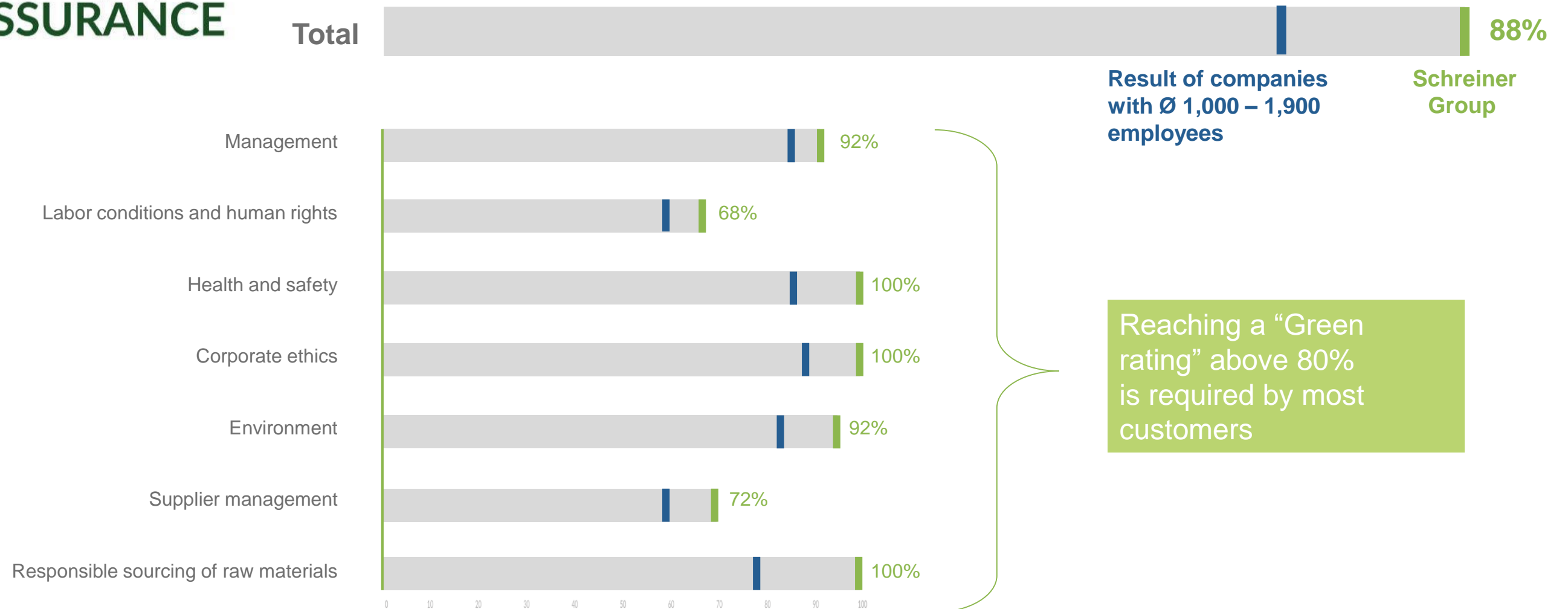
Transport protection film with rPET (≥ 70% chem. recycled)



Evaluation of sustainable films for label-applications (rPET with > 30% recycled content)



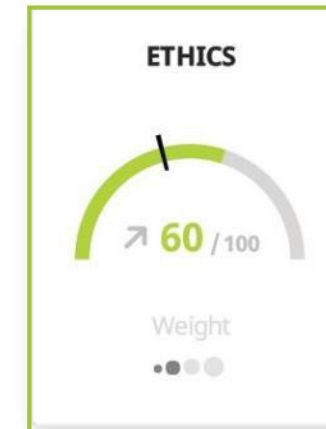
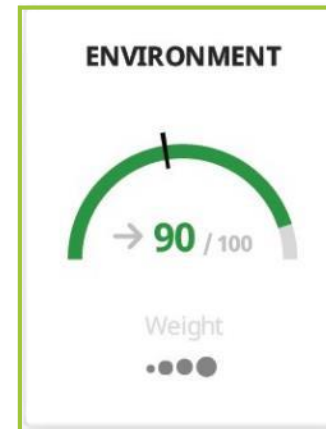
# Supplier Assurance Rating 2023 (SAQ 5.0)



Reaching a “Green rating” above 80% is required by most customers



# Ecovadis Gold Rating 2023 for Schreiner Group



The ecovadis sustainability rating proves that we are among the best 4% of the rated organizations



Our path to a sustainable future

# Commitment: Memberships and Certifications

**schreiner**  
Group

